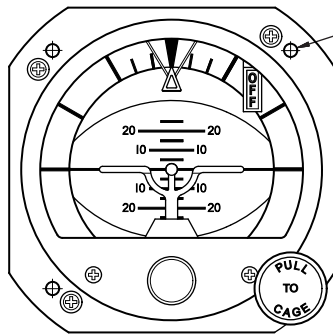
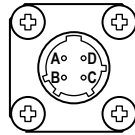


**RCA26 SERIES ELECTRIC HORIZONS**

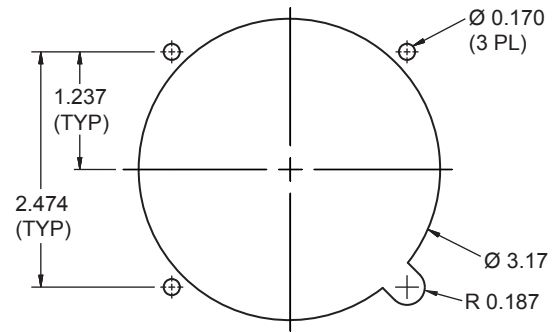


6-32 UNC-2B THD  
LENGTH: 0.75" LIGHTED  
0.5" UNLIGHTED  
(TYPICAL)

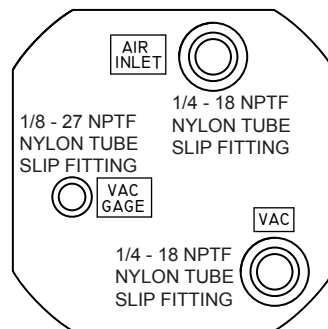
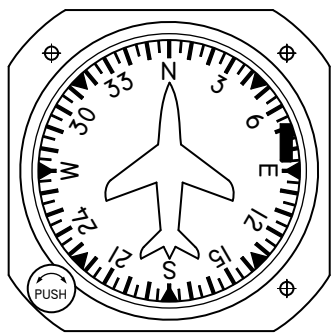


TYPICAL POWER  
PLUG PIN ID

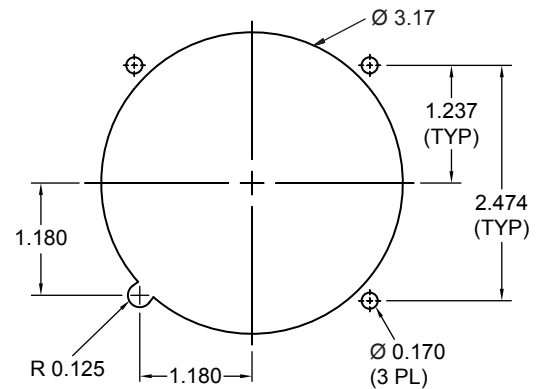
**NOTE:**  
See back of instrument for pin-out information.



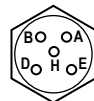
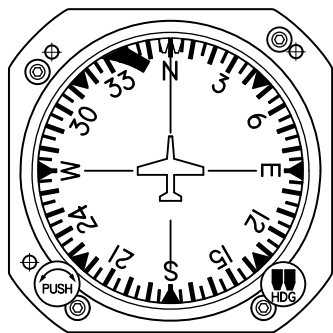
**RCA11 SERIES VACUUM AND RCA15 SERIES ELECTRIC DIRECTIONAL GYROS**



TYPICAL VACUUM FITTING SIZES

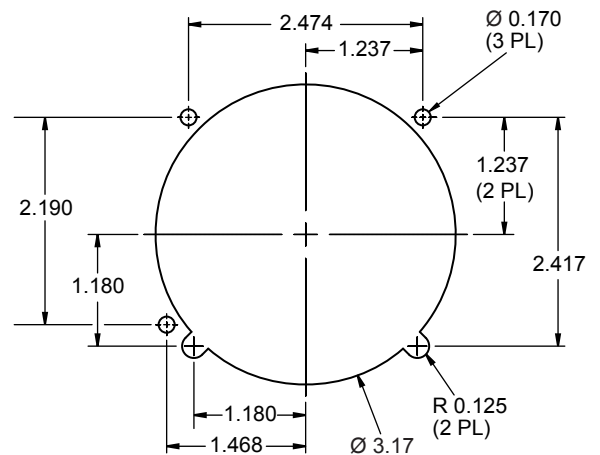


**RCA11 SERIES VACUUM & RCA15 SERIES ELECTRIC DIRECTIONAL GYROS WITH AUTO PILOT**



TYPICAL AUTOPILOT  
PLUG PIN ID

SEE OUR CATALOG  
FOR DETAILED INFORMATION



**RCA22 SERIES VACUUM HORIZON, RCA2600-3 DIGITAL HORIZON  
RCA56 SERIES TURN & BANK AND RCA82 SERIES TURN COORDINATOR**

