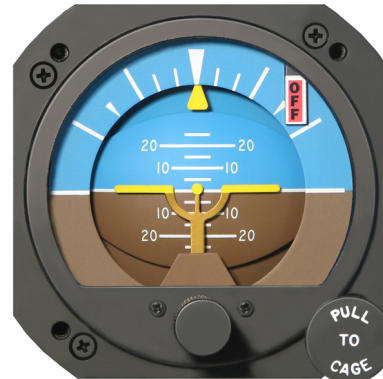




RCA26EK-11
FIXED POINTER

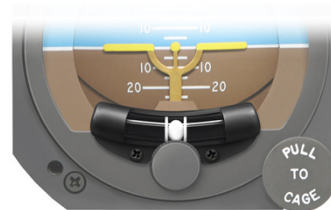


RCA26EK-13
MOVABLE POINTER

The **RCA26EK** Series of gyroscopic Attitude Indicators is the culmination of over 60 years of experience in gyro design. With the Multi-Volt feature, the **RCA26EK** can be installed in virtually any aircraft regardless of its power system. Designed as a direct replacement for the **RCA26AK** (14 volt) and the **RCA26BK** (28 volt) instruments, the **RCA26EK** is built with the same sturdy construction and quality you expect from R.C. Allen.

The **EK** line, which includes the **RCA15EK** Multi-Volt Directional Indicator, can operate at a lower voltage than any other instrument on the market - giving them an extra safety edge in a low voltage situation. Together, they make a "Perfect Pair".

- MULTI-VOLT OPERATION (11 TO 30 VOLTS)
- MULTI-VOLT INTEGRATED LIGHTING
- FITS STANDARD 3" CUTOUT
- BOLD COLOR DISPLAY
- POWER FAILURE FLAG
- FIXED OR MOVABLE POINTER MODELS
- LIGHTED OR NON-LIGHTED
- ONE YEAR LIMITED WARRANTY



The **RCA26EK** can be ordered with an **optional Slip Indicator** (Order P/N 444-0010-01) which satisfies FAA AC 91-75 for even greater versatility.

OPERATING VOLTAGE	11 to 30VDC
STARTING CURRENT	(14VDC system) 2.40 AMPS MAX (28VDC system) 1.40 AMPS MAX
RUNNING CURRENT	(14VDC system) 1.24 AMPS MAX (28VDC system) 0.62 AMPS MAX
CIRCUIT BREAKER SIZE	(14VDC system) 3 AMP (28VDC system) 2 AMP
OPERATING TEMPERATURE RANGE	-30° TO +50° C
DIMENSIONS	SEE FIGURE 1
WEIGHT	2.3 LBS
FAA SPECIFICATION CONFORMANCE	TS0-C4c
MEETS OR EXCEEDS	AS396B

NOTE: Panel tilt angle is set at the factory and must be specified at time of order.

Visit us at: www.kellymfg.com

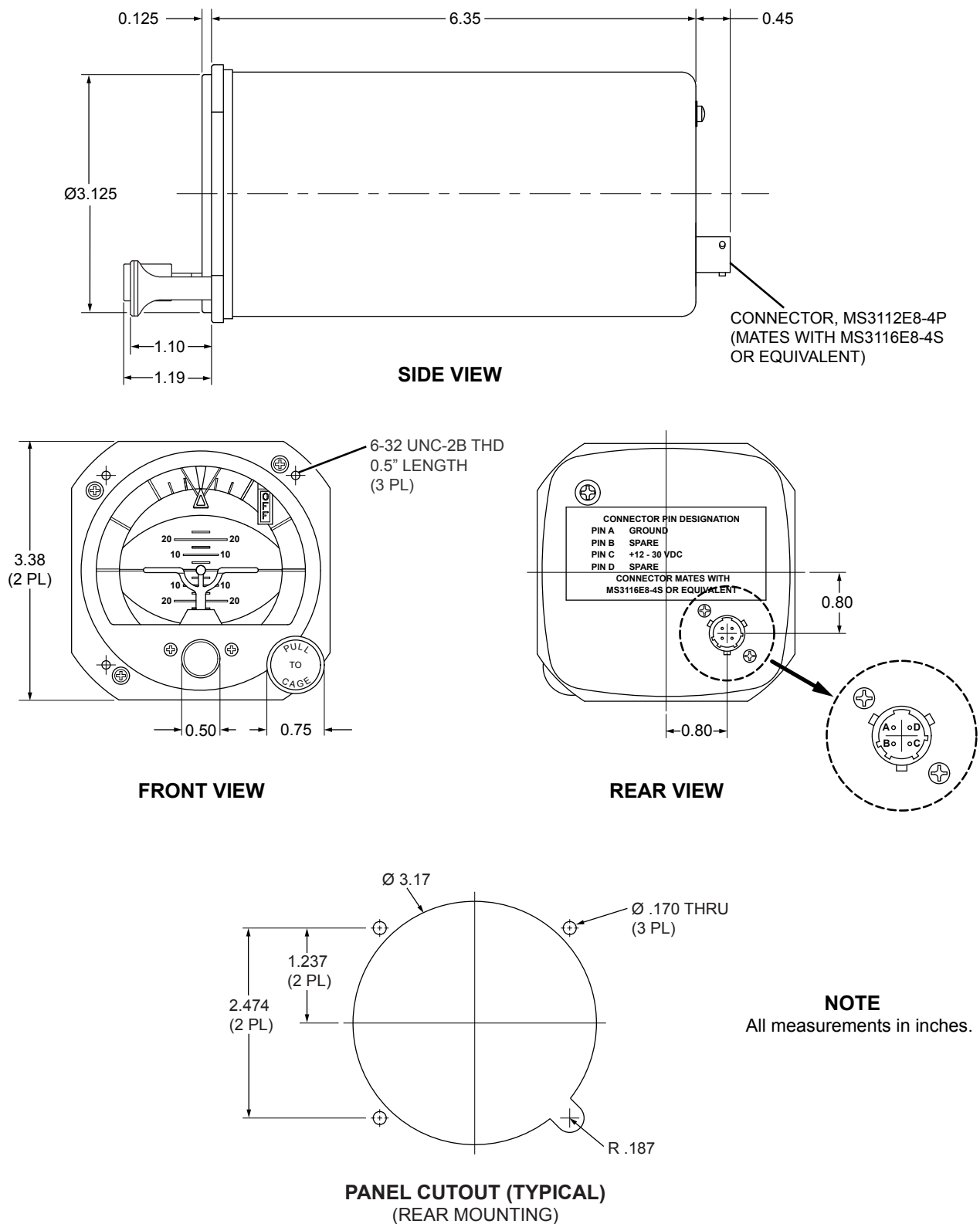
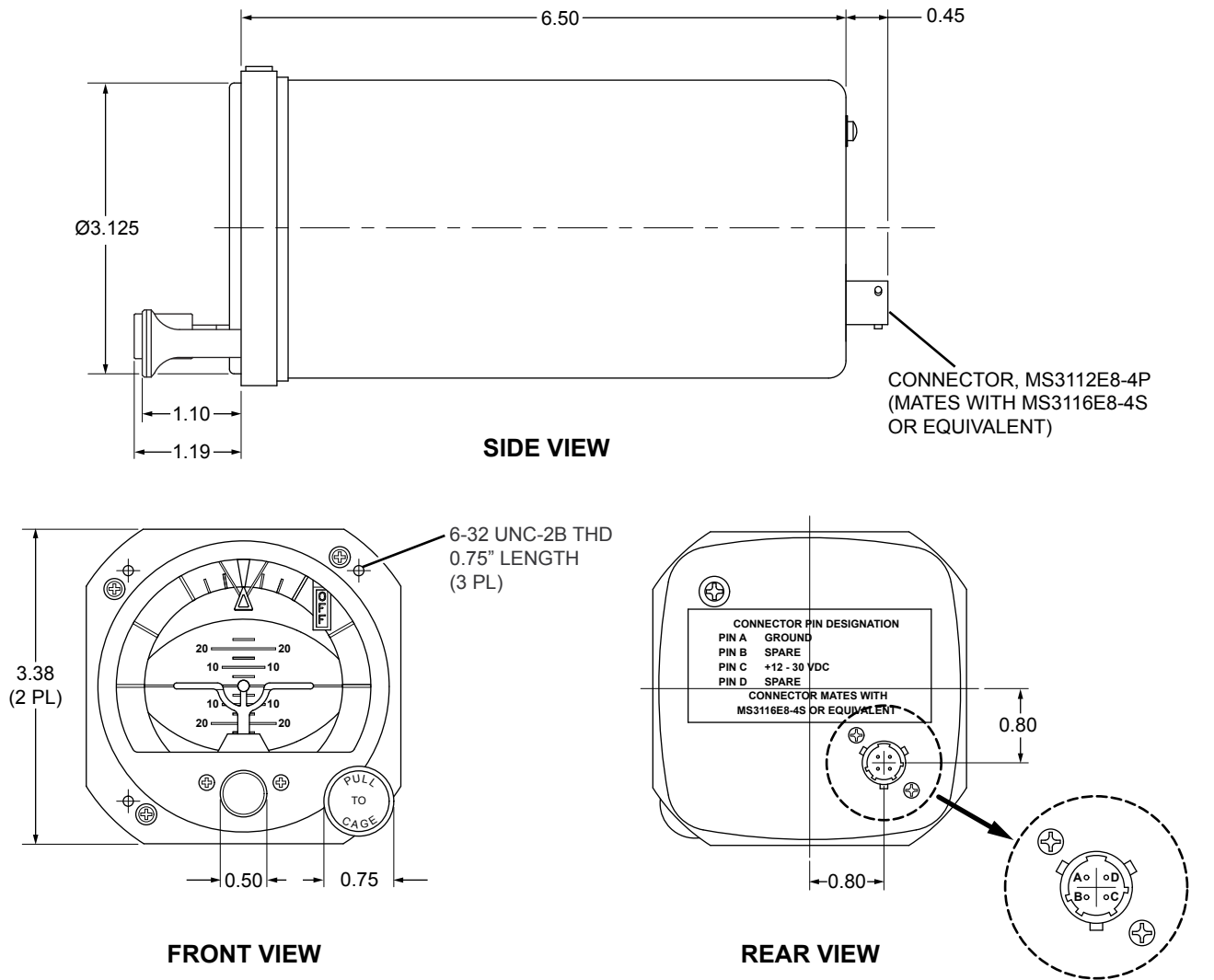


Figure 1, General Dimensions of the RCA26EK-11 (unlighted)



NOTE
All measurements in inches.

Figure 2, General Dimensions of the RCA26EK-12 (lighted)